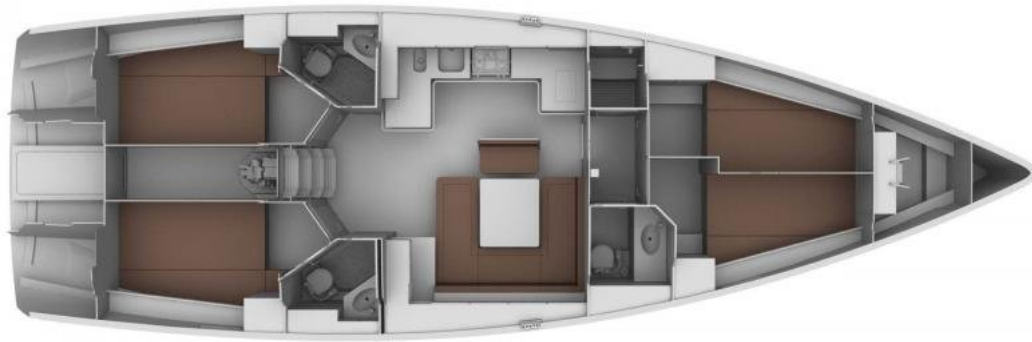


## BAVARIA 45 CRUISER



<b>Year</b>	2010	<b>Wc</b>	3 wc + 1 shower
<b>Model</b>	45 Cruiser	<b>Berths</b>	8
<b>Lenght (m)</b>	14,49	<b>Water (lt)</b>	600
<b>Max beam (m)</b>	4,39	<b>Engine</b>	Volvo 53
<b>Draft (m)</b>	1,87	<b>Fuel (lt)</b>	210
<b>Cabins</b>	4	<b>Fuel consumption</b>	7 Lt/h

**Equipment** : Dinghy, Classic Main sail, Furling Genoa, Bowthruster, Windlass electric, Log – Echo Autohelm, Gps Standardr Garmin, V.H.F. Icom, Deck light, Barometric station, Battery charger, Wind station Tridata Autohelm, Autopilot, Bimini top, Deck shower.

**Equipment on request** : Outborder, Sport facilities, Diving equipment, Diving bottles, Compressor for diving bottle

**Comfort** : Radio – CD Player, Safe, Hot water, Refrigerator

